

Linutop OS 4.0

Operating System Quick user guide



Firefox Open Office VLC player LinutopKiosk Ubuntu

Energy Efficient Computing

Maintenance free system for:
Public Internet access,
Digital signage,
Telecom,
and many other uses.

Linutop OS has been optimized for :



Linutop 3



Linutop 1 Linutop 2 Linutop 4

Specifications:

Linutop Applications

Linutop's Kiosk Software, Linutop setup, Firefox 3.6, Open Office 3.2, VLC Media Player 1.1, GNOME 2.30, Pidgin 2.6, PDF Viewer, Text editor, On screen keyboard, GQ view Picture viewer, File manager, Network manager, VPN, Thin Client: VNC, RDP.

Size: approximately 700Mb

Supported Formats:

Documents: DOC, DOCX, XLS, XLSX, PPT, PPTX, PDF, RAR, ZIP ...
Multimedia: MP3, MP4, AVI, MKV, FLV ...

Linutop can boot on other PCs

BOOTING on an external USB Key

It should boot automatically on USB key if not:

- 1 insert the USB key
- 2 Power on
- 3 enter bios settings
- 4 Go to Boot menu
- 5 Select Hard Disk Drives
- 6 As a First Boot Drive Select USB: Generic Flash Disk
- 7 Press F10 to save

Linutop Setup Menu:



Linutop configuration menu will help you to set up linutop software. You can select the language, keyboard layout and time zone, screen size and auto started applications.

Linutop can be configured to start automatically after reboot:
Multimedia files: audio, video or play lists, slideshows, Linutop Kiosk or any added software.

Linutop Kiosk has a separated configuration menu.

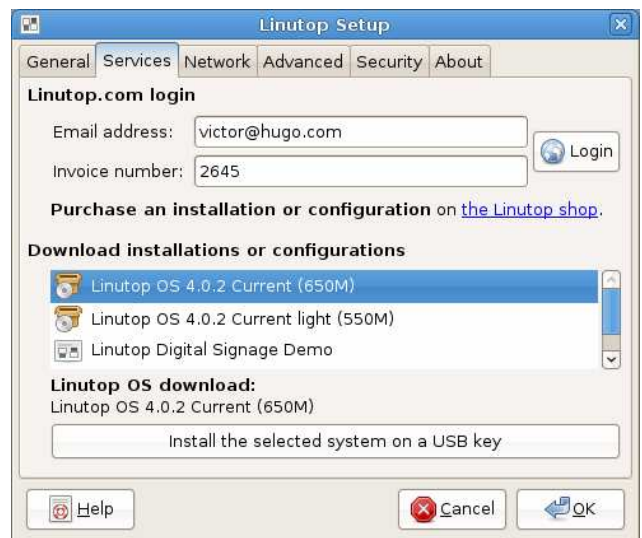
At each start you can have your Linutop:

- Display a Web page,
- Display a presentation,
- Play music or video stream or file

Or you can start automatically a specific application.
Once validated all changes will take effect at the next reboot

You can access the menu in:
Linutop > Linutop Setup

Linutop Services: OS installation or configuration



- Installation

Linutop OS can be downloaded and installed on a USB key, Hard Drive or internal Flash.

Once installed the system is bootable.

- Configuration

Configuration Service will automatically set up your linutop for a specific use.

This feature requires Internet connectivity and also email address and invoice number.

You can access the menu in:
Linutop > Linutop Setup, Services Tab

Linutop Network Setup:



- Enable Network Manager:

Simplifies USB wifi keys use.

- Network configuration:

By default the network uses DHCP to connect to a local network and/or internet and no action from your part should be needed.

You can configure Static IP, Wifi usb key with WEP, WAP, Or Modem

- Shared folders:

Helps you to set up and share linutop data on your network.

- Windows Shares access:

Helps you to set up an access to a shared directory on a Windows system via the network. Enter the IP address of the Windows unit and the name of the shared directory.

- Remote access:

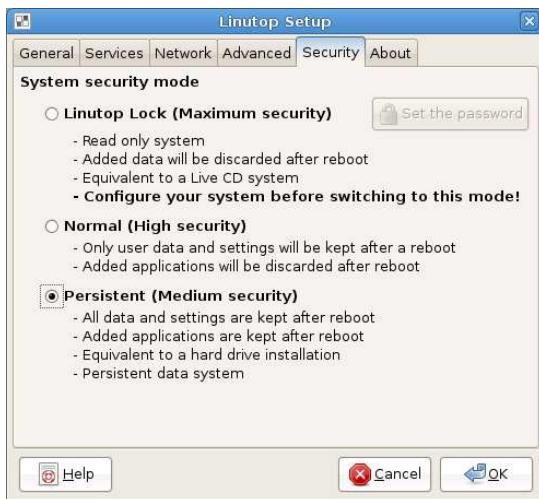
Configure the remote access to your linutop Desktop. A VNC client can be used to access the linutop screen using the linutop IP address displayed in the 'About' tab.

You can access the menu in:

Linutop > Linutop Setup, Network tab

Security:

Your Linutop can be locked with a password, and will be restored after reboot as it was at the lock point. This feature is designed to minimize maintenance costs.



1) Switch to linutop lock mode (**Maximum security**)

2) **High security** (user settings and data only persistence)

3) Switch to **Medium security** to set up the system (add applications, edit the default settings and change the system configuration...).

To deactivate the lock mode go back to this menu. The password will be requested.

You can access the menu in:

Linutop > Linutop Setup , Security Tab

Advanced configuration:



- Backup/Restore

Save your configuration on a 1GB or more USB Key. The USB key is a bootable backup.

Restore your linutop by booting on a Linutop USB Key and restore on the internal device: /dev/sda

- Misc: (only for Advanced Users)

- Daily reboot to prevent memory saturation.
- Command line system without Xorg (no graphical interface)
- Disk check at boot time.

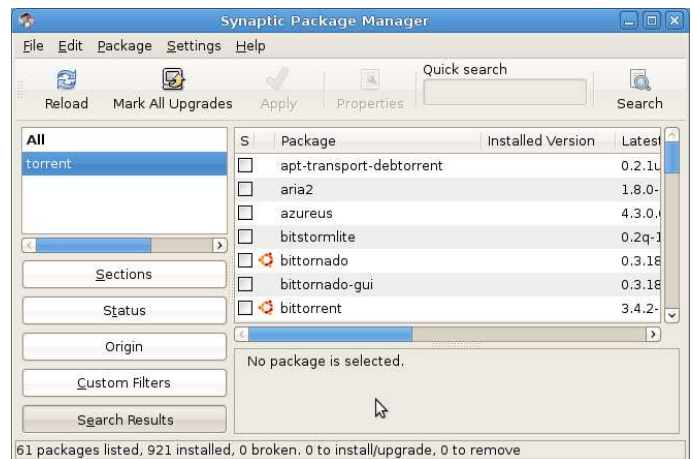
- Format a USB key in FAT

- System Reset to remove all newly installed software and configs.

You can access the menu in:

Linutop > Linutop Setup, Advanced Tab

Adding software:



You can add software by using synaptic.

You can access the menu in:

Linutop > System > Administration > Synaptic Package Manager

Linutop system structure:

1 partition: **ext3** containing the system and user data.

Screen saver pictures in: /cdrom/photo

Play lists samples in: /cdrom/playlists

User data are stored in: /home/linutop

User desktop is stored in: /home/linutop/Desktop(Linux is case sensitive)

Peripherals compatibility, Setup...

- Please check on our Wiki www.linutop.com/wiki

- Recommendation: **Always have a backup of your data and system.**