

Linutop XS

Quick user guide



Epiphany



Libre Office



VLC player



LinutopKiosk



Debian

Energy Efficient Computing

**Maintenance free system for:
Digital signage,
Public Internet access,
Telecom and more...**

Package content :

- 1 Linutop XS computer
- 1 AC Adapter

Optional items :



VESA mounting bracket
to attach Linutop XS on the
VESA monitor (7,5 or 10 cm)



HDMI to VGA adaptor

Specifications:

Linutop Applications

Linutop's Kiosk Software, Linutop Configuration Panel, Epiphany, Libre Office, VLC Media Player, PDF Viewer, Text editor, On screen keyboard, Picture viewer, File manager, Kernel 3.18.7-v7+

System base On Raspberry Pi Debian (Raspian)

Default USER: pi Password: raspberry

System Size: approximately 2900 MB

RAM: 1GB MB

Storage: 1000MB free on 4GB

Supported Formats:

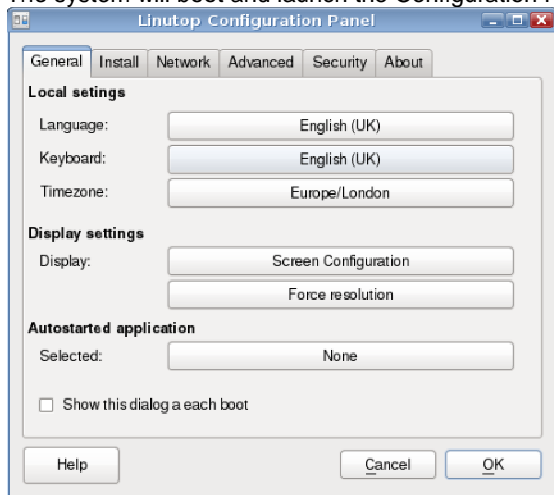
Documents: DOC, DOCX, XLS, XLSX, PPT, PPTX, PDF, RAR, ZIP ...

Multimedia: MP3, MP4, DIVX, MKV, AVI, FLV, MOV ...

Linutop XS Initial setup :

- 1 - Connect monitor on HDMI port, keyboard and/or mouse on the USB ports and Ethernet Cable or wifi USB key.
- 2 - Power on by connecting AC adapter

The system will boot and launch the Configuration Panel.

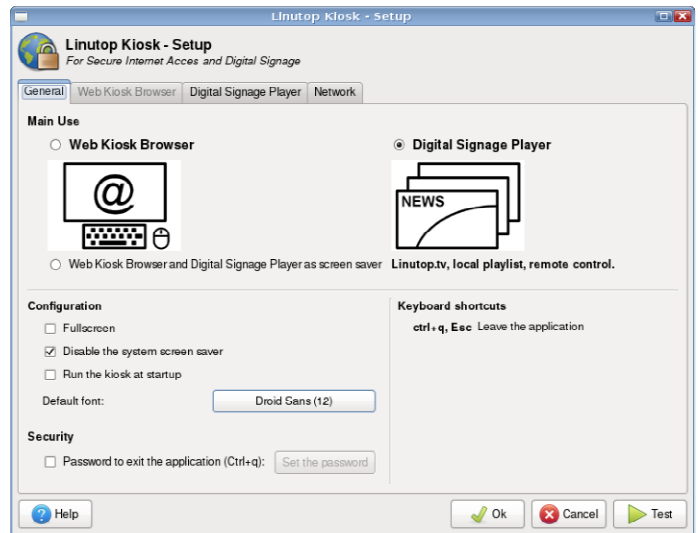


Use the Linutop Configuration Panel to:

- Select your keyboard (default is 102key-intl) and language (default is EN)
- Select your timezone

Note : software utility available in Linutop → Linutop → Linutop Control panel Menu
Your system is now ready to use.

Linutop Kiosk Setup Menu: General setup



Linutop Kiosk Can be configured in 2 modes:

1) Restricted WEB Kiosk Browser :

To access a web site with security

2) Digital Signage Player System :

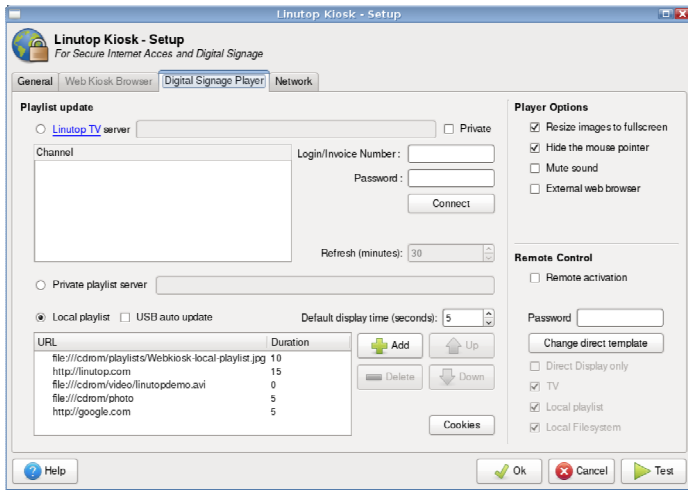
To Display a playlist of Image, Video/ Audio, PDF, Web page.

For a dedicated use you can Select:

Run the kiosk at startup and / or Full screen

Press the **Esc** Key let you quit the application.

Linutop Kiosk Setup Menu: Digital Signage Player



The Linutop Kiosk in Digital Signage can be configured in 4 modes:

- Linutop.TV

Enter your Login account and Password/Email
Then select your channel

- Private server

Enter your sever address and then Login account and Password/Email, then select your channel

- Private playlist

Enter your playlist/sever address

- Local Playlist (Optional USB update)

Compose your playlist below and select the display time

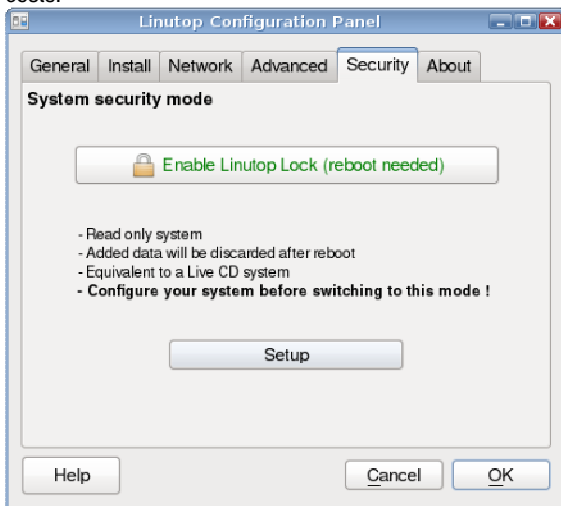
The remote (experimental) can let you to interact with the playlist while playing, or display a message live on the screen.

The remote control is a web page accessible from any devices on your local network, PC, Table, SmartPhone.

Page 4

Security /password:

Your Linutop can be locked with a password, preventing any modification for the main system. This feature is designed to minimize maintenance costs.



You can access the menu in:

Linutop > Configuration Panel > Lock Root Rights

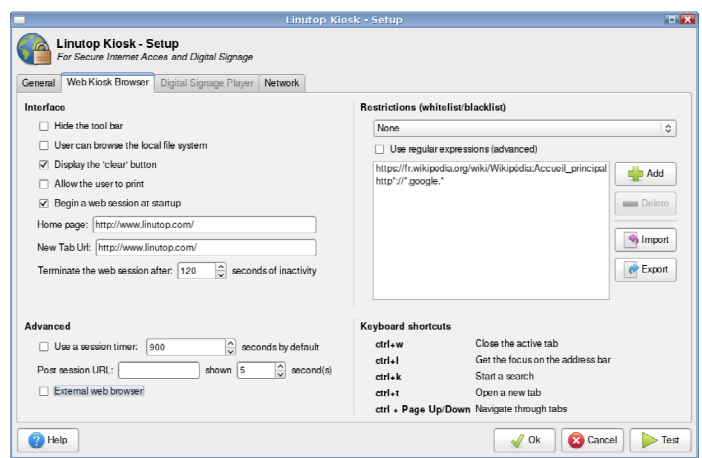
Remember the Password as it cannot be recovered if lost...

Misc: (only for Advanced Users)

- Enable Boot to Desktop/Console
- Graphic / Command line system (no graphical interface)
- Enable /Disable SSH (Network Remote command access)
- Setup VNC (Graphic Remote Access)

Page 6

Linutop Kiosk Setup Menu: WEB Kiosk Browser



The Linutop WEB Kiosk is a Web browser

This Menu allows to:

- Hide the navigation tool bar
- Access the local file system
- Select the First URLs
- Select a URL Black list or White list
you can use * to allow any character chain
- Select a Time out session (time without mouse or key event)
before going back to the selected URL

Page 5

Adding software:

You can add software by using The apt-get command

Limitations:

- Processing Power:

The system is small, you can check the Processor use with the 'top' command in a terminal

- Timer:

There is no onboard battery back up; the system needs to be connected to the internet at boot time to set up its time automatically.

- Memory:

The RAM size is 1GB and is not expendable only the storage micro SD can be extended up to 64GB!!

The SD card has a limited amount write cycles over 3 years on average and is not covered by the warranty over a year.

Be careful Using the "sudo" command it can harm your system

Screen saver pictures in: /cdrom/photo

User data are stored in: /home/pi

User desktop is stored in: /home/pi/Desktop (Linux is case sensitive)

Recommendation: **Always have a backup of your data.**

Peripherals compatibility, Setup...

- Please check on our Wiki: www.linutop.com/wiki
- or: <http://doc.linutop.com/> on-line documentation

Save on your electricity bills

Enjoy your Linutop!

Page 7