

Linutop OS 5.0

Operating System Quick user guide



Firefox



Libre Office



VLC player



LinutopKiosk



Ubuntu

For PC & Linutop PC

Energy Efficient Computing

Maintenance free system for:
Public Internet access,
Digital signage,
Telecom,
and many other uses.

Linutop OS has been optimized for PC :



Specifications:

Linutop Applications

Linutop's Kiosk Software, Linutop Configuration Panel, Firefox 21, Libre Office 3.5, VLC Media Player 2, XFCE 4.1 PDF Viewer, Text editor, On screen keyboard, Picture viewer, File manager, Network manager, VPN, Kernel 3.2.0-27

Size: approximately 700Mb - Installable on USB key or Hard Drive

Supported Formats:

Documents: DOC, DOCX, XLS, XLSX, PPT, PPTX, PDF, RAR, ZIP ...
Multimedia: MP3, MP4, DIVX, MKV, AVI, FLV, MOV ...

Linutop can boot on other PCs

BOOTING on an external USB Key

It should boot automatically on USB key if not:

- 1 insert the USB key
- 2 Power On and enter **BIOS settings** (Del or F2 key...)
- 3 Go to Boot menu and Select Hard Disk Drives
- 4 As a First Boot Drive Select USB: Generic Flash Disk
- 5 Press F10 to save

Compatibility:

Hard Drive, USB key, Flash memory
Minimum Processing power x86 500Mhz
Minimum RAM: 512 MB
Minimum Storage: 700MB
Drivers: Ubuntu 12.04

Linutop Setup Menu:

Linutop configuration menu will help you to set up linutop software. You can select the language, keyboard layout and time zone, screen size and auto started applications.

The system may need an Internet connection to install some language.



Linutop can be configured to start automatically after reboot:
Multimedia files: audio, video or play lists, slideshows, Linutop Kiosk or any added software.

Linutop Kiosk has a separated configuration menu.

At each start you can have your Linutop:

- Display a Web page,
- Display a presentation,
- Play music or video stream or file
- Start Linutop Kiosk for digital signage

Or you can start automatically a specific application.
Once validated all changes will take effect at the next reboot

You can access the menu in:
Linutop > Configuration Panel

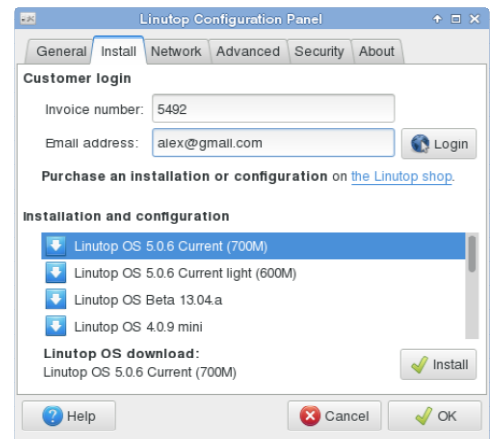
Linutop Services: OS installation or configuration

Installation tab

Allows a system installation on an other device (Hard drive, USB key or flash)

As well as automated installation of software upgrade or configuration,

It is fast an easy



- Installation

Linutop OS can be downloaded and installed on a USB key, Hard Drive or internal Flash.

Once installed the system is bootable.

- Configuration

Configuration Service will automatically set up your linutop for a specific use.

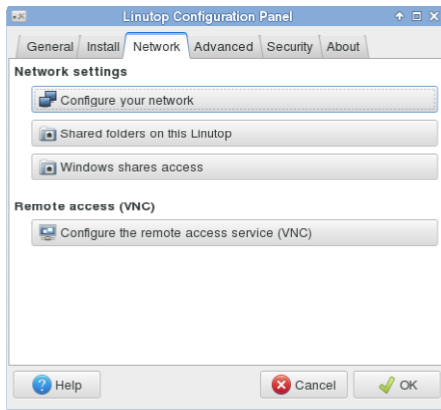
- Linutop Lamp configuration automatically installs a local LAMP server.

- **Linutop TV** Configuration can set up the system for an automated update to www.linutop.tv **Digital Signage Service.**

This feature requires Internet connectivity and also an Invoice number and email address.

You can access the menu in:
Linutop > Configuration Panel > Services Tab

Linutop Network Setup:



- **Network Manager** Simplifies USB wifi keys use.

- Network configuration:

By default the network uses DHCP to connect to a local network and/or internet and no action from your part should be needed.

You can configure Static IP, Wifi usb key with WEP, WAP, Or Modem

- Shared folders:

Helps you to set up and share linutop data on your network.

- Windows Shares access:

Helps you to set up an access to a shared directory on a Windows system via the network. Enter the IP address of the Windows unit and the name of the shared directory.

- Remote access VNC:

Configure the remote access to your linutop Desktop. A VNC client can be used to access the linutop screen using the linutop IP address displayed in the 'About' tab.

You can access the menu in:

Linutop > Configuration Panel > Network tab

Security:

Your Linutop can be locked with a password, and will be restored after reboot as it was at the lock point. This feature is designed to minimize maintenance costs.



1) Switch to linutop lock mode (**Maximum security**) to set up the system (add applications, edit the default settings and change the system configuration...).

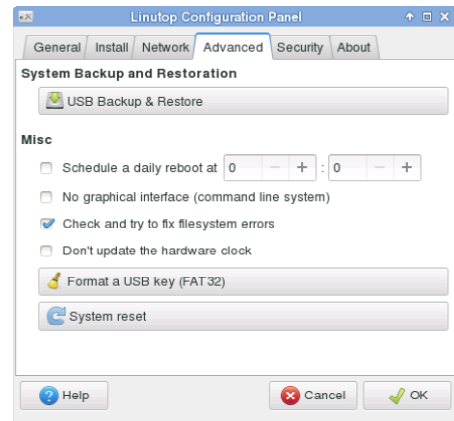
To deactivate the lock mode:

Press Ctrl+Alt+Shift+S go The password will be requested and go back to this menu.

You can access the menu in:

Linutop > Configuration Panel > Security Tab

Advanced configuration:



- Backup/Restore

Save your configuration on a 1GB or more USB Key. The USB key is a bootable backup.

Restore your linutop by booting on a Linutop USB Key and restore on the internal device: /dev/sda

- Misc: (only for Advanced Users)

- Daily reboot to prevent memory saturation.

- Command line system without Xorg (no graphical interface)

- Disk check at boot time.

- Do not update the BIOS system time

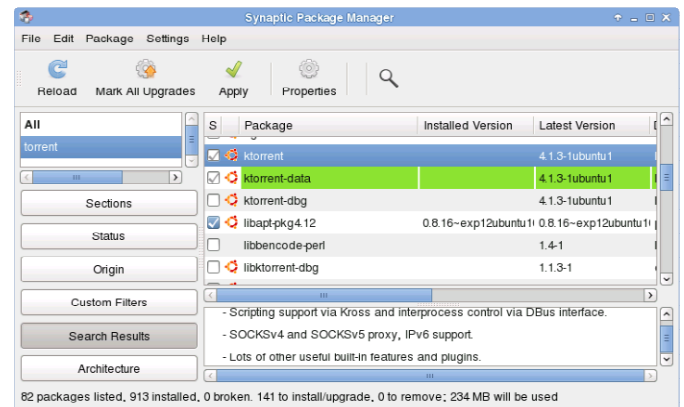
- Format a USB key in FAT

- System Reset to remove all newly installed software and configs.

You can access the menu in:

Linutop > Configuration Panel > Advanced Tab

Adding software:



You can add software by using synaptic.

You can access the menu in:

Linutop > System > Administration > Synaptic Package Manager

Linutop system structure:

1 partition: **ext3** containing the system and user data.

Screen saver pictures in: /cdrom/photo

User data are stored in: /home/linutop

User desktop is stored in: /home/linutop/Desktop(Linux is case sensitive)

Peripherals compatibility, Setup...

- Please check on our Wiki: www.linutop.com/wiki

- or: <http://doc.linutop.com/> online documentation

- Recommendation: **Always have a backup of your data and system.**